

# VIVID COLOURS FOR HP INDIGO

When we live in a world that explodes with colours, why should our printable media be any different? Escape the standard white and let your wild side out with KernowPrint Vivid Colours for HP Indigo.

## WHY CHOOSE US?

Whether you are producing quick-turn signs in safety orange, luxury menus in rich black, or critical signage in a variety of vivid colours, our media save you time, effort, and ink! Pre-coloured sheets deliver consistent, rich, vibrant colours for your most vivid of applications and when combined with CMYK or white ink, a whole new world of special effects is just a click away!

## FEATURES

- Produce consistent, beautiful, bold colours time and time again without needing to flood the entire sheet with ink or toner
- Leverage the power of white ink in new ways by overprinting on vibrant shades of yellow, red, orange and black!
- Deliver incredibly vivid safety signs, POP displays, and advertisements in shades impossible to hit with CMYK alone!

simply  
**TOUGHER**  
than paper

## UK, EU AND ROW PRODUCT LIST

PRODUCT DESCRIPTION	SIZES	PRODUCT CODE
128µ KernowPrint for HP Indigo (PET) Vivid Yellow	SRA3 320x460 500x707	123KIVY
123µ KernowPrint for HP Indigo (PET) Vivid Red	SRA3 320x460 500x707	123KIVR
128µ KernowPrint for HP Indigo (PET) Vivid Orange	SRA3 320x460 500x707	123KIVO
123µ KernowPrint for HP Indigo (PET) Vivid Black	SRA3 320x460 500x707	123KIVK

## US PRODUCT LIST

PRODUCT DESCRIPTION	SIZES	PRODUCT CODE*
5 mil KernowPrint for HP Indigo (PET) Vivid Yellow	SRA3 12x18	CV245
5 mil KernowPrint for HP Indigo (PET) Vivid Red	SRA3 12x18	CV247
5 mil KernowPrint for HP Indigo (PET) Vivid Orange	SRA3 12x18	CV249
5 mil KernowPrint for HP Indigo (PET) Vivid Black	SRA3 12x18	CV252

\*for the size/pack-specific codes, please refer to our Narrow Format Product Guide

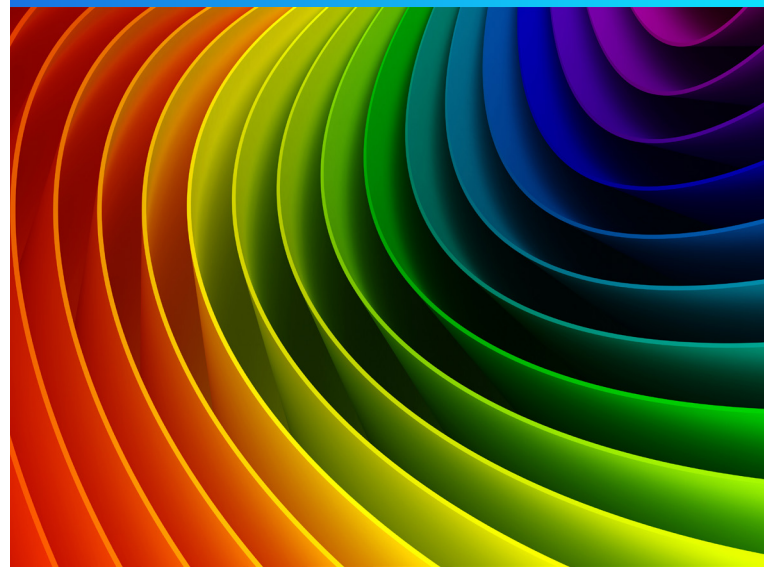


KERNOWPRINT®  
FOR HP INDIGO  
POWERED BY COBALT™

COBALT  
COATING TECHNOLOGY™

# KERNOWPRINT FOR HP INDIGO VIVID COLOURS (PET)

*Durable, Versatile, Creative*



INTRODUCING THE KERNOW  
**TRUEMATCH**  
CUSTOM PROGRAM!

No more wasting time trying to hit that challenging shade with CMYK. Kernow's TrueMatch Custom Program provides you with synthetic materials already coloured to your specification!

### VIVID COLOURS:

Overall Toughness: ★★★★★

Outdoor Use: ★★★

Heat Resistance: ★★★★★

Chemical Resistance: ★★★

Rigidity: ★★★★★

Adhesive: N/A

Service Range: -40°C to +255°C  
(-40°F to +491°F)

### Special Features:

- Water-resistant
- Detergent-resistant
- Superior ink adhesion
- Blue-wool scale 6-7

### VIVID BLACK:

Overall Toughness: ★★★★★

Outdoor Use: ★★★★★

Heat Resistance: ★★★★★

Chemical Resistance: ★★★

Rigidity: ★★★★★

Adhesive: N/A

Service Range: -40°C to +255°C  
(-40°F to +491°F)

### Special Features:

- Water-resistant
- Detergent-resistant
- Superior ink adhesion
- Blue-wool scale 7

# KernowPrint for HP Indigo (PET) Vivid Colours


**Compatibility:**

Laser/Dry Toner: ★

HP Indigo: ★★★★★

Inkjet: N/A

**COMPATIBILITY GUIDANCE:**

 Certified for  
 HP Indigo

## KEY FEATURES

- Waterproof, tearproof, greaseproof, can be hole punched
- Ideal for separators & high impact point of sale displays
- Perfect for white ink printing to create stunning effects

## IDEALLY SUITED FOR

- Colour regulated ID's
- Retail tags
- Bar menus
- Report covers
- Event passes
- Colour-coded documents
- ID and information tags
- Safety signage
- Eye-catching marketing pieces
- Unique shelf signage

**Typical Value**
**Units**

Property	123KIVY/CV245	123KIVR/CV247	123KIVO/CV249	123KIVK/CV252	
<b>Total Thickness</b>	123/4.8	123/4.8	128/5	123/4.8	<b>μ/mil</b>
<b>Weight</b>	165	170	178	165	<b>gsm</b>
<b>Opacity</b>	> 99	> 99	> 99	> 99	<b>%</b>
<b>CIE Whiteness</b>	N/A	N/A	N/A	N/A	<b>CIE WI</b>
<b>Gloss 60°</b>	< 4	< 4	< 4	< 3	<b>%</b>
<b>Shrinkage</b>	MD -0.37 TD +0.1	MD -0.37 TD +0.1	MD -0.37 TD +0.1	MD -0.37 TD +0.1	<b>%</b>
<b>Tensile Strength</b>	MD 16 TD 18	MD 16 TD 18	MD 16 TD 18	MD 20 TD 28	<b>kgF/mm2</b>
<b>Elongation at break</b>	MD 140 TD 115	MD 140 TD 115	MD 140 TD 115	MD 170 TD 110	<b>%</b>
<b>Melting Point</b>	250/482	250/482	250/482	250/482	<b>°C/°F</b>

**Recommended conditions:**

<b>Printroom</b>	10°C - 30°C (50°F - 86°F)	40% - 55% RH
<b>Storage</b>	10°C - 20°C (50°F - 68°F)	20% - 55% RH

Please return unused product to its original packaging.  
 Shelf Life: 24 months after delivery (under recommended storage conditions).

The information provided herein is correct to the best of our knowledge. No liability for any errors, facts or opinions is accepted. We recommend users make their own assessments to satisfy themselves as to the suitability of this product for their application. Regional certification differences apply.