



KERNOWJET REFLEKTION

KernowJet Reflektion 119 has a high-gloss silver metallic finish on both sides. The water-resistant coating on the front-face is printable with Solvent, Latex and UV cured inks, while the rear side is only printable with UV inks. Used as a hanging display film, it will perform like a mirror film. Reflektion 119 can also be used for shop decoration items, for example when pre-scored and folded. On demand, we can create specific metallized colours in different silver or gold shades. Metallic red, blue, and green colours are also possible. Imagination is your only limit.

WHY CHOOSE US?

This unique product is a niche solution mainly for POS. It can be used as printed or unprinted display panels in POS for cosmetics or other retail display applications. When printed, the use of white inks is highly recommended to maximise display impact. The anti-static coating avoids printing issues and attracting dust once installed.

KERNOWJET®

FEATURES

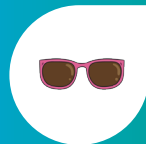
- High-gloss, mirror finish, silver metallic film
- Maximum display impact in point of sale displays
- Easy to handle with anti-static back coating

US PRODUCT LIST

PRODUCT DESCRIPTION	WIDTH	LENGTH	PRODUCT CODE
4.7mil KernowJet Reflektion 119 119SGM	60"	100'	119SGM

KERNOWJET REFLEKTION

SILVER MIRROR POLYESTER FILM



LUXE LOOK FOR
LUXE PRODUCTS

"The reflective surface creates a sense of movement and intrigue, drawing customers in to take a closer look."

Machine Compatibility:

Latex: ★★★

(Eco)Solvent: ★★★

UV: ★★★

KernowJet Reflektion



KEY FEATURES

- High gloss coating for maximum mirror finish
- Clear antistatic back-coat avoids attracting dust and slipping in the printer
- Water resistant
- Both sided printable with UV-curable inks

IDEALLY SUITED FOR

- Roller banner displays
- Roll-up displays
- Retail signage or POS

	Typical Value	Units
Property	119SGM	
Total Thickness	119 +/- 8 4.7	µ/mil
Weight	163 +/- 5	gsm
Light Transmission %	>90	%
Tensile Strength	MD 17 TD 10	kgF/mm2
Melting Point	250	°C

Recommended conditions:

Printroom	15°C - 30°C (59°F - 86°F)	30% - 65% RH
Usage	-40°C - 80°C (-40°F - 176°F)	10% - 90% RH
Storage	10°C - 20°C (50°F - 68°F)	20% - 50% RH

The information provided herein is correct to the best of our knowledge. No liability for any errors, facts or opinions is accepted. We recommend users make their own assessments to satisfy themselves as to the suitability of this product for their application. Regional certification differences apply.